



# Warehouse & Production

MOTION INTERTECH CO.,LTD.





# Business Activity and partnership

MOTION INTERTECH CO.,LTD.

## BUSINESS ACTIVITIES

Designer, manufacturer, assembler and main distributor of lifting and handling solutions for Gantrex rail and clip, PODEM Hoist. Products include Industrial Crane, Overhead Travelling Crane, Electric Chain and Rope Hoist, Explosion Proof Crane and Railing systems and so on. Also inclusive of Repairing, Preventive Maintenance with engineering certificate ( ๒๑ ๑ ) and Crane Modernization.

## Business Partnership



**GANTREX**  
ON TRACK. WITH YOU.



**EUROCRANE**  
LIFTING EQUIPMENT



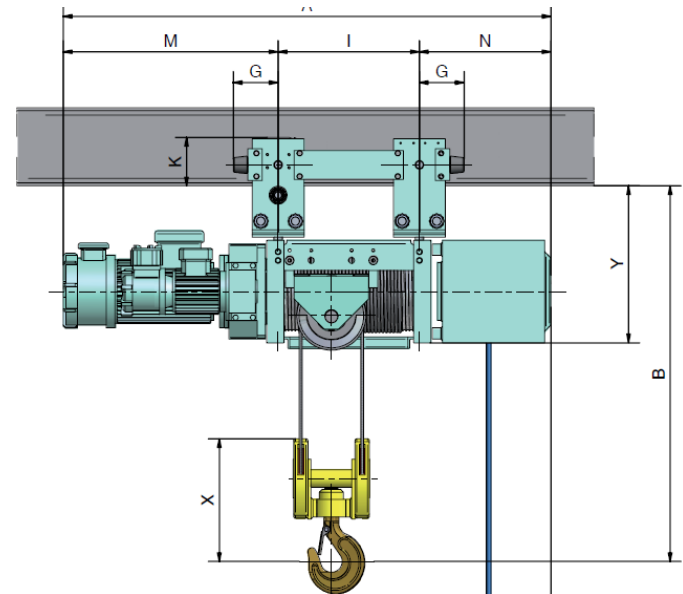


# Products

MOTION INTERTECH CO.,LTD.

## Products

- **Hoist (Chain hoist, Wire rope hoist, Ex-Proof Hoist)**
- Overhead/Gantry Crane
- Drive/Wheel /End Carriage
- Goods Hoist
- Railing System
- Dock Equipments



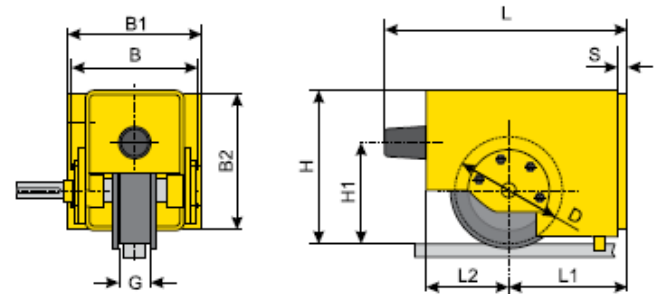
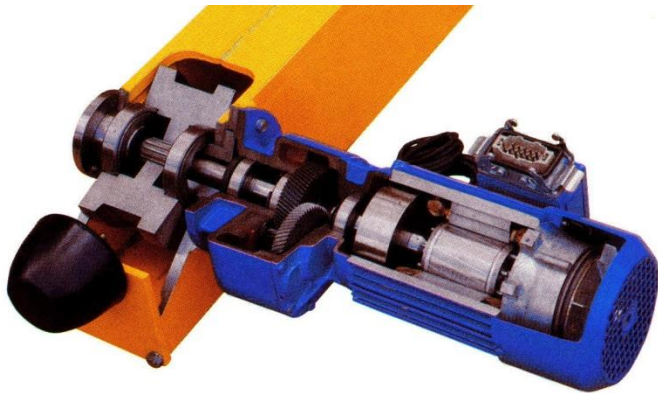
## Products

- Hoist (Change hoist, Wire rope hoist)
- **Overhead/Gantry Crane**
- Drive/Wheel /End Carriage
- Goods Hoist
- Railing System
- Dock Equipments



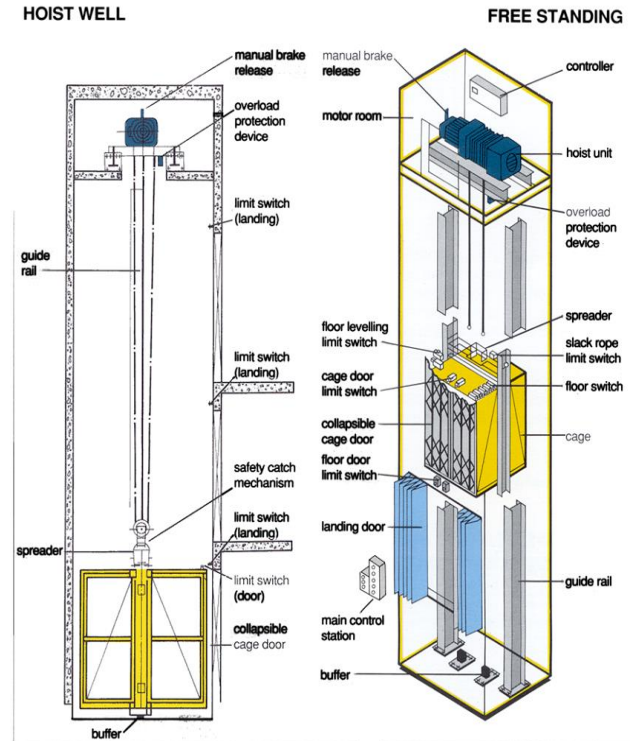
## Products

- Hoist (Change hoist, Wire rope hoist)
- Overhead/Gantry Crane
- **Drive/Wheel/End Carriage/Components**
- Goods Hoist
- Railing System
- Dock Equipments



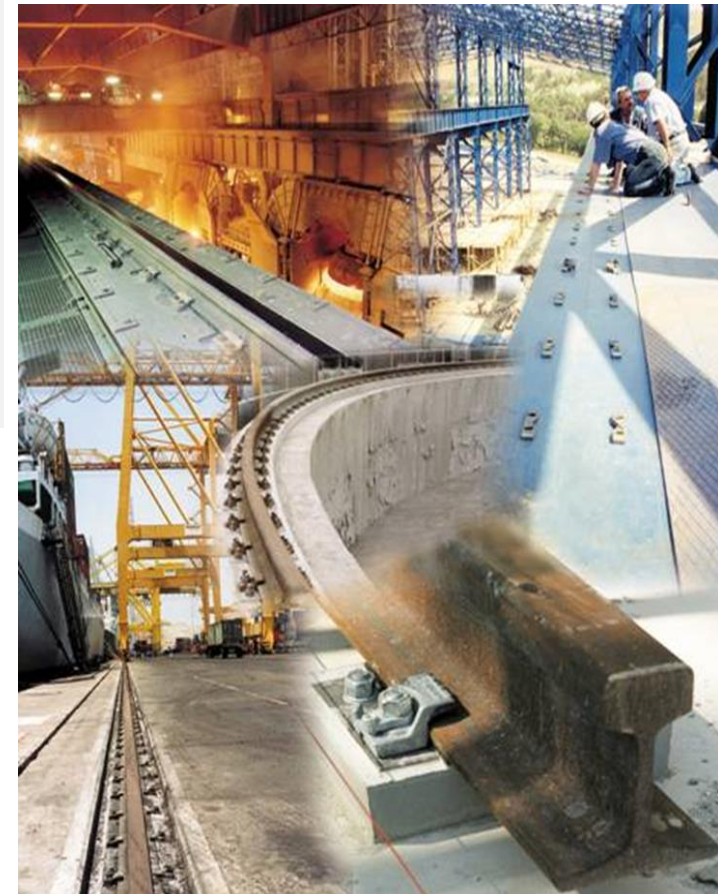
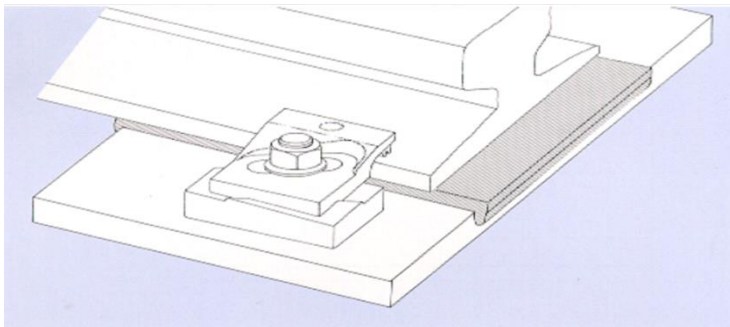
## Products

- Hoist (Change hoist, Wire rope hoist)
- Overhead/Gantry Crane
- Drive/Wheel/End Carriage
- **Goods Hoist**
- Railing System
- Dock Equipments



## Products

- Hoist (Change hoist, Wire rope hoist)
- Overhead/Gantry Crane
- Drive/Wheel/End Carriage
- Goods Hoist
- **Railing System**
- Dock Equipments



- Offering preventive maintenance and Spare parts for all brands of crane and material handling systems, including:

- Spare parts
- On-call/Emergency
- Preventive/Service contracts
- Operator and training
- Commissioning and inspection
- Modernization/upgrading
- Test weight





# **Project Ref, ( Faculty of Engineer)**

**MOTION INTERTECH CO.,LTD.**

**Equipment : 1 Sets**

**Crane Type : Single Girder**

**Hoist Type : Wire rope hoist**

**Capacity : 10 t**

**Span : 7.7 m.**

**Runway : 39 m.**



**Equipment : 2 Sets**

**Crane Type : Ex-Proof Crane**

**Hoist Type : Wire rope hoist**

**Capacity : 2 t**

**Span : 7m.**

**Runway : 12 m.**





# Project Ref, ( Automotive )

MOTION INTERTECH CO.,LTD.

**Equipment : 3 Sets**

**Crane Type : Single Girder Crane**

**Hoist Type : Wire rope hoist**

**Capacity : 10 t**

**Span : 10 m.**

**Runway : 70 m.**



**Equipment : 2 Sets**

**Crane Type : Single girder**

**Hoist Type : Wire Rope hoist**

**Capacity : 10 t**

**Span : 15 m.**

**Runway : 60 m.**



**Equipment : 1 Sets**

**Crane Type : Single girder**

**Hoist Type : Wire Rope hoist**

**Capacity : 5 t**

**Span : 20 m.**

**Runway : 40 m.**



**Equipment : 2 Sets**

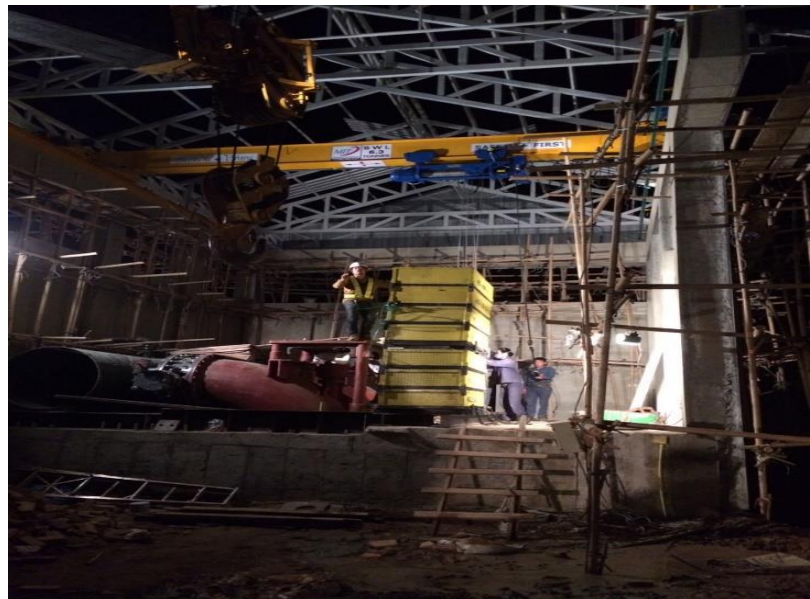
**Crane Type : Single girder**

**Hoist Type : Wire rope hoist**

**Capacity : 6.3 t**

**Span : 10 m.**

**Runway : 12 m.**



**Equipment : 2 Sets**

**Crane Type : Double Girder**

**Hoist Type : Wire rope hoist**

**Capacity : 10 t**

**Span : 30 m.**

**Runway : 150 m.**



**Equipment : 1 Sets**

**Crane Type : Single Girder**

**Hoist Type : Wire rope hoist**

**Capacity : 10 t**

**Span : 20 m.**

**Runway : 96 m.**



**Equipment : 4 Sets**

**Crane Type : Single Girder**

**Hoist Type : Wire rope hoist**

**Capacity : 10 t**

**Span : 15 m.**

**Runway : 96 m.**



**Equipment : 1 Sets**

**Crane Type : Single Girder**

**Hoist Type : Wire rope hoist**

**Capacity : 2 t**

**Span : 24 m.**

**Runway : 20 m.**



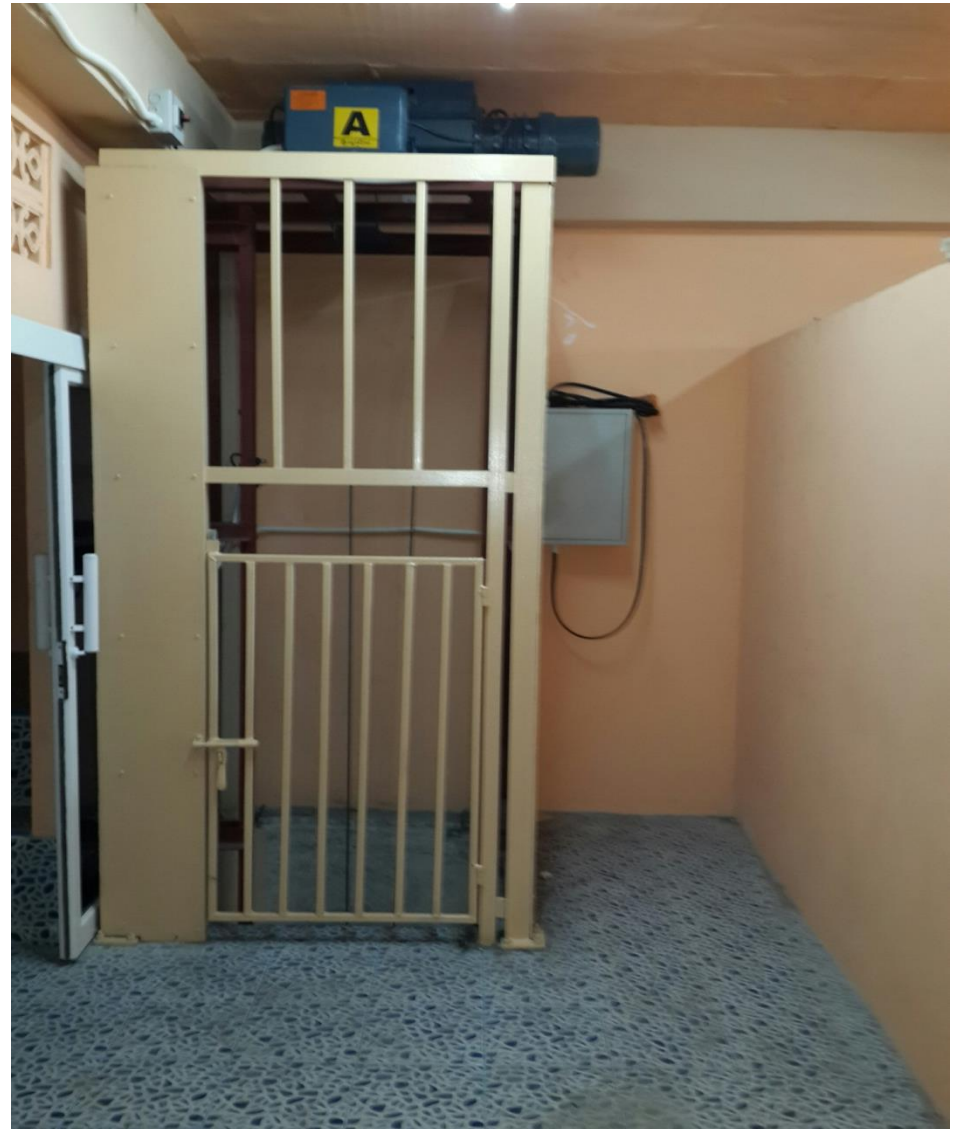
**Equipment : 3 Sets**

**Goods Hoist Type: 1 T/4 floors**

**Hoist Type : Wire Rope hoist**

**Capacity : 2 t**

**Floor : 4**





# **Project Ref, ( Build Material)**

**MOTION INTERTECH CO.,LTD.**

**Equipment : 1 Set**

**Crane Type : Crane 5T span 20m**

**Capacity : 5 t**

**Span : 20 m.**





# **Project Ref, ( Pet Industry)**

**MOTION INTERTECH CO.,LTD.**

**Equipment : 1 Set**

**Crane Type : Crane 5T span 20m**

**Capacity : 5 t**

**Span : 20 m.**

**Location: Ladkrabang**

**Application: mold changing (Pet Industry)**

**With Radio Remote Control**



**Equipment : 1 Sets (Modernization)**

**Crane Type : Gantry Crane**

**Hoist Type : Wire rope hoist**

**Capacity : 32 t**

**Span : 18 m.**

**Location: Chonburi**

**Application: Coil yard**



Equipment : 2 Sets

**Crane Type : Gantry Crane**

**Capacity : 32 t**

**Span : 18 m.**

**Runway : 30 m.**

**Project Value : 11 m.**



**Equipment : 2 Sets**

**Crane Type : Double Girder Crane**

**Hoist Type : Wire rope hoist**

**Capacity : 16 t**

**Span : 20 m.**

**Runway : 48 m.**



**Equipment : 1 Sets**

**Crane Type : Double Girder Crane**

**Hoist Type : Wire rope hoist**

**Capacity : 16 t**

**Span : 20 m.**

**Runway : 50 m.**



**Equipment : 1 Sets**

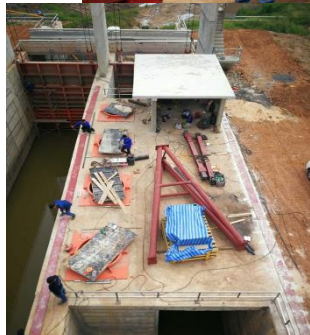
**Crane Type : Gantry Crane**

**Hoist Type : Wire rope hoist**

**Capacity : 10 t**

**Span : 10 m.**

**Runway : 30 m.**





# Project Ref, ( Automotive )

MOTION INTERTECH CO.,LTD.

**Equipment : 1 Sets**

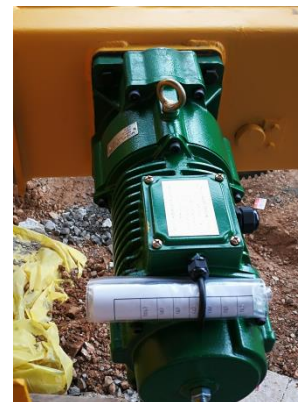
**Crane Type : Double Girder Crane**

**Hoist Type : Wire rope hoist**

**Capacity : 16/10 t**

**Span : 12 m.**

**Runway : 77 m.**





# Project Ref, ( Compressor )

MOTION INTERTECH CO.,LTD.

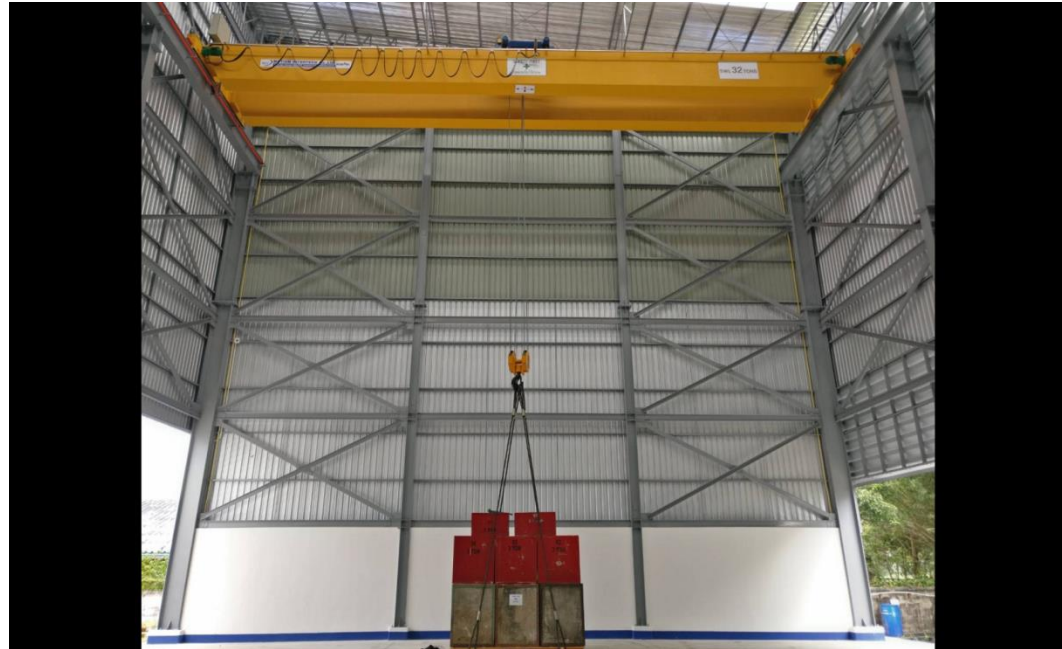
**Equipment : 1 Sets**

**Crane Type : Double Girder Crane**

**Hoist Type : Wire rope hoist**

**Capacity : 32 t**

**Span : 20 m.**



**PAE** P&E TECHNICAL SERVICE COMPANY LIMITED  
 10/2, 10/3, 10/4, 10/5, 10/6, 10/7, 10/8, 10/9, 10/10, 10/11, 10/12, 10/13, 10/14, 10/15, 10/16, 10/17, 10/18, 10/19, 10/20, 10/21, 10/22, 10/23, 10/24, 10/25, 10/26, 10/27, 10/28, 10/29, 10/30, 10/31, 10/32, 10/33, 10/34, 10/35, 10/36, 10/37, 10/38, 10/39, 10/40, 10/41, 10/42, 10/43, 10/44, 10/45, 10/46, 10/47, 10/48, 10/49, 10/50, 10/51, 10/52, 10/53, 10/54, 10/55, 10/56, 10/57, 10/58, 10/59, 10/60, 10/61, 10/62, 10/63, 10/64, 10/65, 10/66, 10/67, 10/68, 10/69, 10/70, 10/71, 10/72, 10/73, 10/74, 10/75, 10/76, 10/77, 10/78, 10/79, 10/80, 10/81, 10/82, 10/83, 10/84, 10/85, 10/86, 10/87, 10/88, 10/89, 10/90, 10/91, 10/92, 10/93, 10/94, 10/95, 10/96, 10/97, 10/98, 10/99, 10/100

**SELF INSPECTION REPORT**

Project Name: [ ] Date: [ ] Page: 1 of 1

Site: [ ]

Client: [ ]

Contract No: [ ]

Scope of Work: [ ]

Inspector: [ ]

Checked: [ ]

Approved: [ ]

Remarks: [ ]

Item	Spec	Actual	Remarks
1	1.1	1.1	
2	1.2	1.2	
3	1.3	1.3	
4	1.4	1.4	
5	1.5	1.5	
6	1.6	1.6	
7	1.7	1.7	
8	1.8	1.8	
9	1.9	1.9	
10	1.10	1.10	

Report Date: [ ]

Inspector: [ ]

Checked: [ ]

Approved: [ ]

Signature: [ ]

Date: [ ]



# Project Ref. ( Rail & Clip for Mining Machine)

MOTION INTERTECH CO.,LTD.

**Equipment : Replacement of Rail for stacker / Reclaimer 2 , length 2500 m**

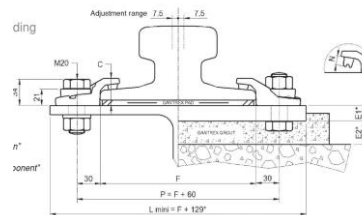
**Rail Type : UIC 60 (R260)**

**Clip Model: Gantrex BG 15  
(galvanized)**

**Clip Type : Boltable**

**Capacity : Max. admissible side load :  
125kN**

**Project Value : 15 MTHB**





# Project Ref, ( Laemchabang Port D 1,2,3)

MOTION INTERTECH CO.,LTD.

**Installation : Rail A-150 with  
Gantrex Clip , 2000m for Laemchabang  
Port D1,2,3**

**Rail Type : A 150 (DIN Standard)**

**ClipModel:Gantrex W 20 (galvanized)**

**Clip Type : Weldable**

**Capacity : Max. admissible side load :  
225kN**

**Project value : 40 MTHB**

